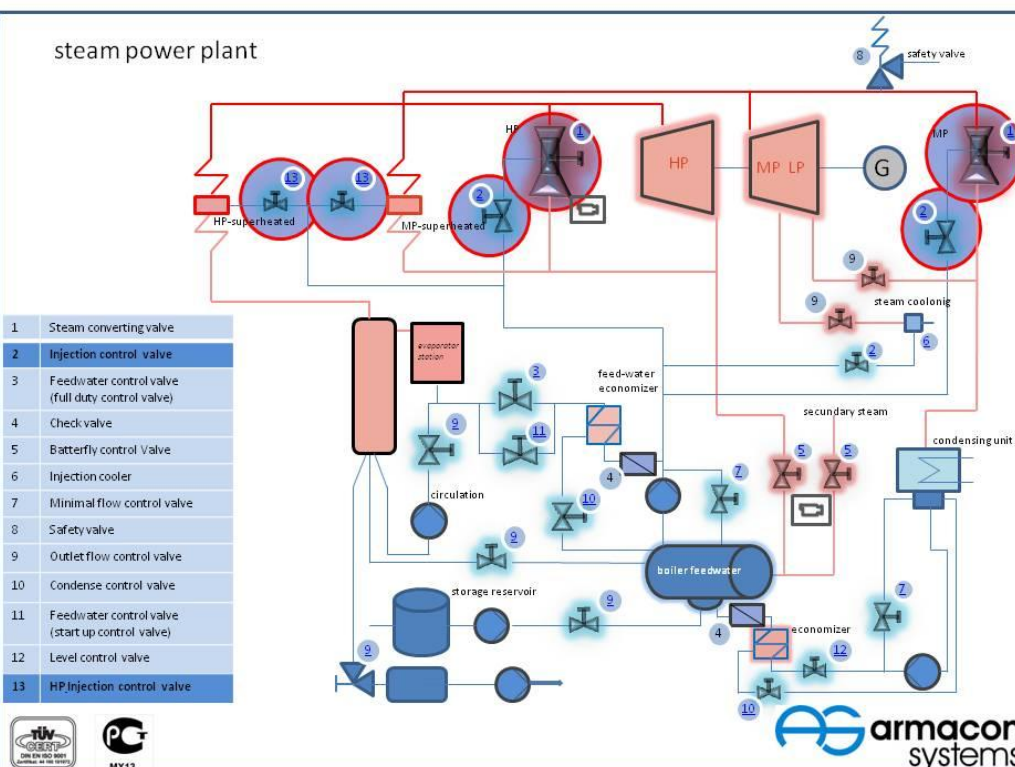


Injection-Control Valve



steam power plant



armacon-systems GmbH

Hansapark 1
 D-39116 Magdeburg, Deutschland
 Tel: 0391 - 244 625 0
 Fax: 0391 - 244 625 11
 eMail: info@armacon-systems.de

Bankverbindung

Volksbank Börde-Bernburg eG
 BLZ 810 690 52,
 Kto-Nr. 7324928
 BIC GENODEF1WZL
 IBAN DE 66 8106 9052 000 732 4928

Geschäftsführerin

Dipl. Ing. Petra Wenig

Handelsregister

AG Magdeburg HRB 14479
 USt-Id.Nr.: DE 237919303
 St.-Nr.: 102/105/12921



Injection Valves are used for the regulation of temperature in the end level of over heater, as well as for the injection of cooling water in Steam Converting Valves .

To guarantee a quick maintenance, the Injection Control Valve has a quick changeable seat ring. Because of the construction of The Injection Control Valve, the plug can be changed as quickly as the seat ring. To assure the sealing, a sealing package is included.

According to pressure lost, it is possible to change the plug or to add leveled multi hole cages.

